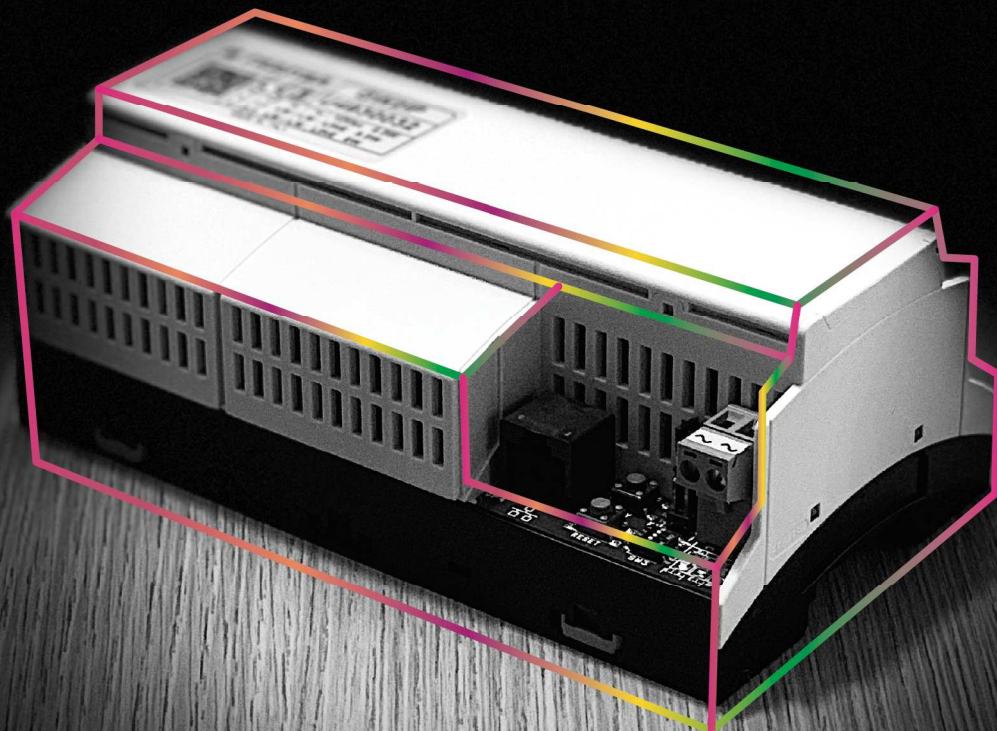




**gateway**  
**EVOLUTION**

*Your daily Solution*



# gateway EVOLUTION

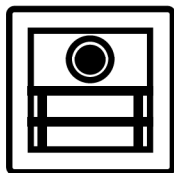


- **an only module** for whole the installation
- even for **existing plants**
- **really easy** connection for new users!



*your daily  
Solution*

**DUO**  
S Y S T E M



In the Farfisa vision, the **IP** and **Domotic** contexts, in which the system user requires continuous connection to his video door entry system, allowing **remote availability and reachability**, materialize with the extension of the Duo System digital system that interfaces with the world IP.

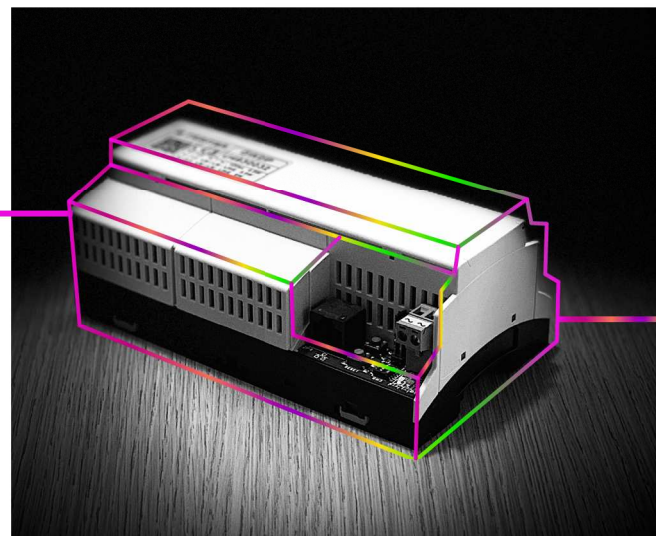
## GW2IP

**Gateway module that allows you to interface the Duo system to the IP world, expanding its functionality.**

Among the features: the video call, conversing with the visitor and controlling access also remotely without limits of distances. The system is based on the Farfisa cloud service developed specifically to make the installation, use and maintenance of the system more simple as possible. The gateway can be used not only for single-family installations, but also within one or more apartments of a multifamily system or as a device shared amongst all the apartments of the same system. In all cases the availability of an Internet connection, wired or wireless is required.

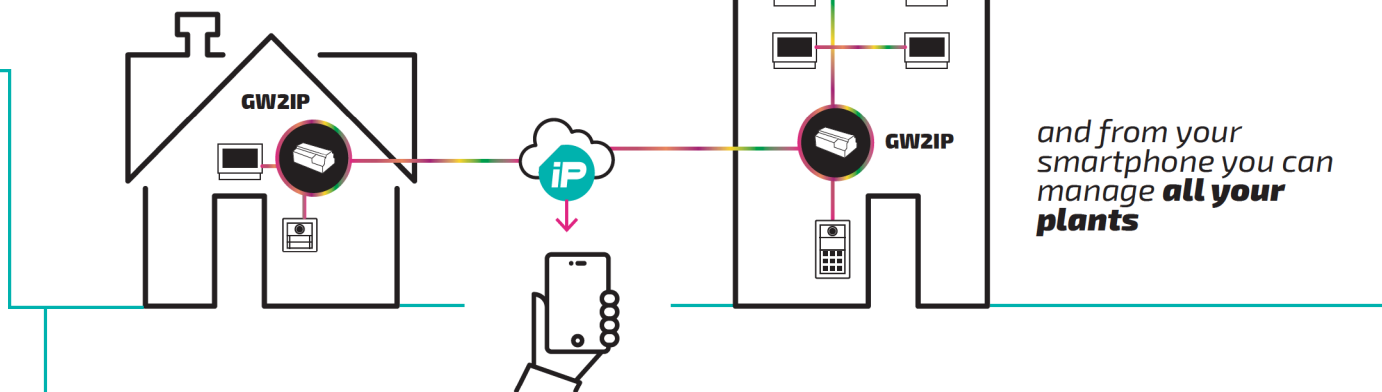
Each user can associate multiple mobile devices (Smartphone or Tablet) which will therefore activate simultaneously with the arrival of the call; only the user who will answer first, will be able to talk to the visitor and open the lock. The system integrates also the video memory function. The IPWAY CLOUD application is available for both **Android** and **iOS systems** in the respective stores.

The GW2IP gateway can be powered either via the DUO bus or separately with a local power supply. DIN rail container (9 modules). The possibility to use the GW2IP in multi-user systems is linked to the purchase of the specific service.





**An only gateway module for each installation**



and from your smartphone you can manage **all your plants**

## technical features



**App IpWay Cloud for iOS and Android**



**Connecting to local net via Ethernet or Wi-Fi**



**Proprietary cloud infrastructure**



**Automatic connection to cloud**



**Simplified web programming interface**



Farfisa  
**IP cloud**

## functions



Videocalls



Bidirectional audio and remote door opening



Notice push  
Notice for lost call in case of missed answer



Control auto switch-on on all external stations in an installation



Audio activation with all the external stations even ifncase of auto switch-on



Event list with all the calls, answers (even the lost ones), with time and date (for 1 month)



Video memory with 4 pictures for each received call (for 1 month)



Remote actuators management  
Remote sensors management



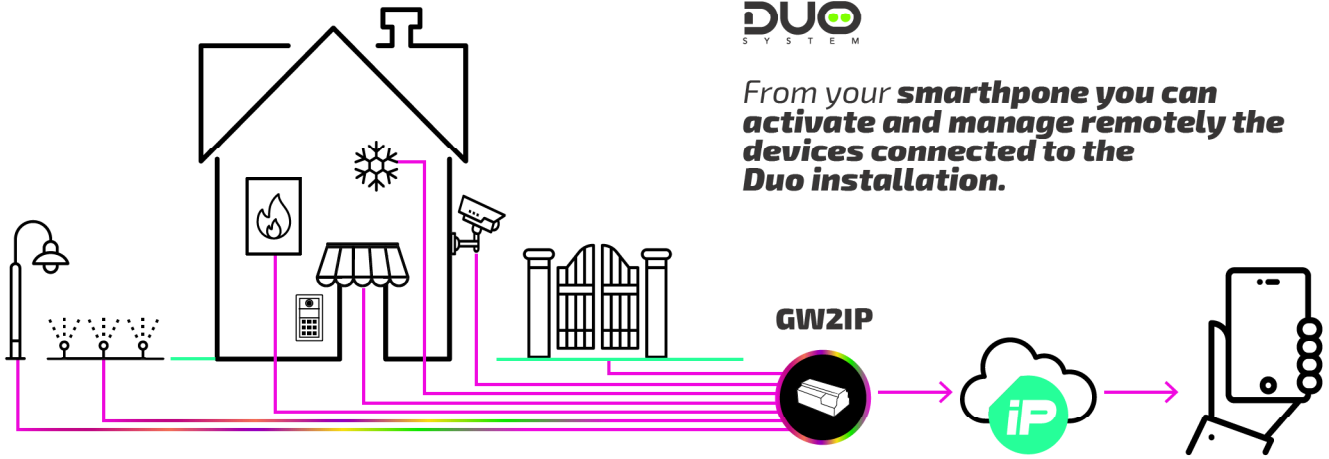
Integration with videosurveillance cameras



Compatibility with existing Duo installations

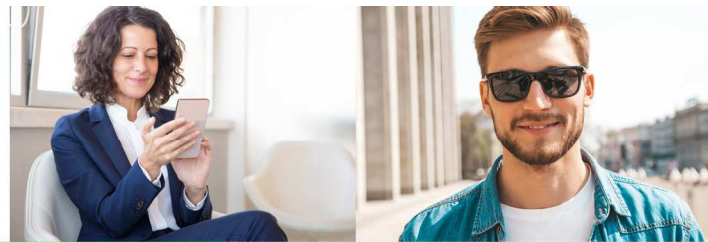


From your **smartphone** you can **activate and manage remotely** the devices connected to the Duo installation.



## applications examples

- You are in the office and somebody rings you at the door, but nobody is at home. Your smartphone rings, you see the person ringing, **you can talk to him and if you want, you can open the door and let him in.**



- You are at the supermarket, your son rings at the door because he has not the keys, but nobody is at home. Your smartphone rings, **you see him, you talk to him, open the door and let him in.**

- You are in your car and a visitor rings you at the door, but nobody is at home. Your smartphone rings, **you see the person, and if you want, you can talk to him and if you want you can open the door and let him in.**



- You are having a bath and someone rings you at the door. Your smartphone is near you and it rings, **you see the person outside, you talk to us and if you want you can open the door.**

- You are in a bar and you want to check if anyone is in the driveway. **Take your smartphone, go to the app and connect to the camera watching what is happening in front of the camera.**



**ACI srl** Via Ezio Vanoni, 3 · 60027 Osimo (An) · ITALY  
T +39 071.7202038 | F +39 071.7202037  
[info@farfisa.com](mailto:info@farfisa.com) | [www.farfisa.com](http://www.farfisa.com)



MADE IN ITALY